

Materials Manager™ Pro CCC Edition

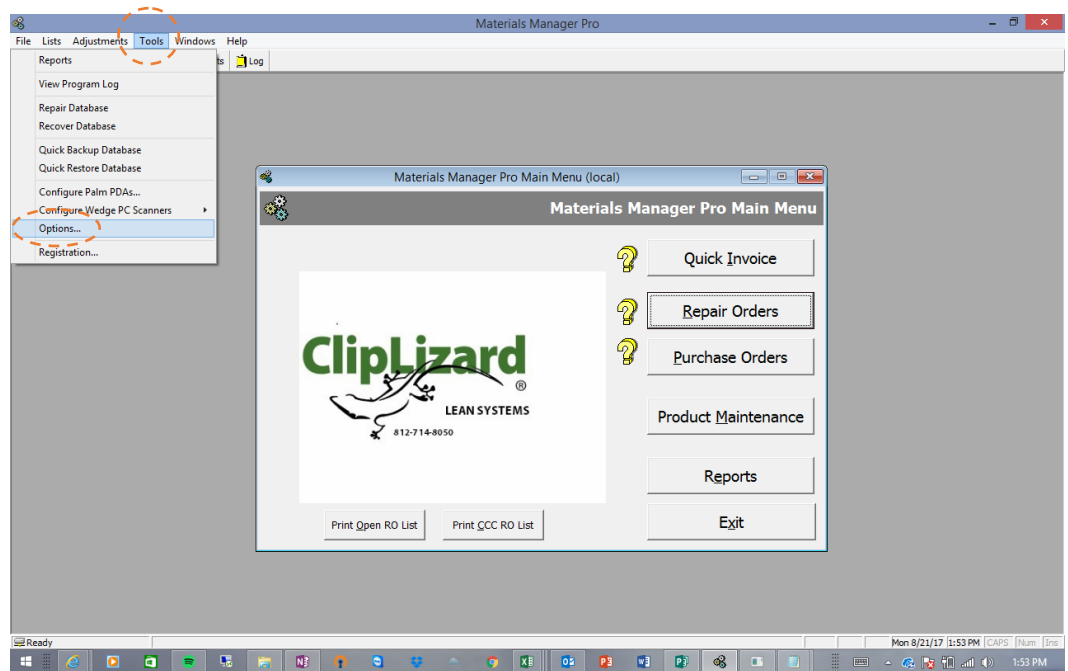


Setup instructions

(Software Part# 750500)

From the Initial Materials Manager™ Screen:

1. Click <Tools>
2. Click <Options>



Tools, Options Screen (MISC tab)

3. Click Tab: “CCC ONE”
4. Check Box: “Use CCC”
5. Enter CCC ONE License Number:
6. If available from CCC: enter path to receive Active RO List
7. Click <Save>

