

---

## Materials Manager Networking Quick Guide

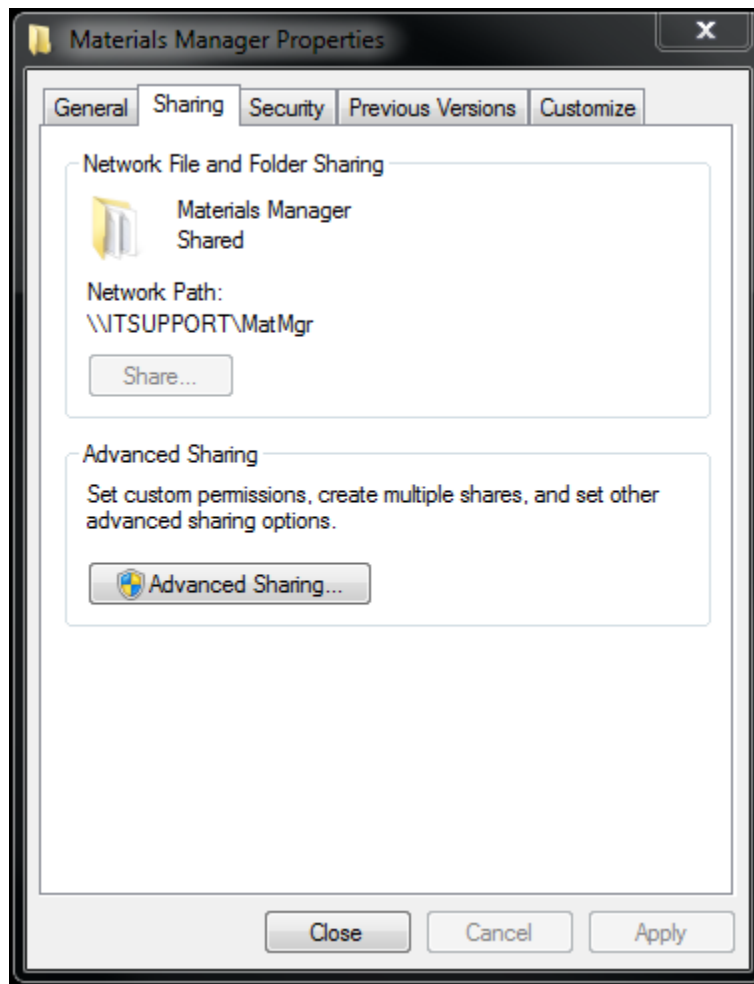
---

**Please note: ALL machines will need to be running the same version of Materials Manager for this process to be successful. These instructions work for both Materials Manager Lite and Pro.**

On the host (server) machine:

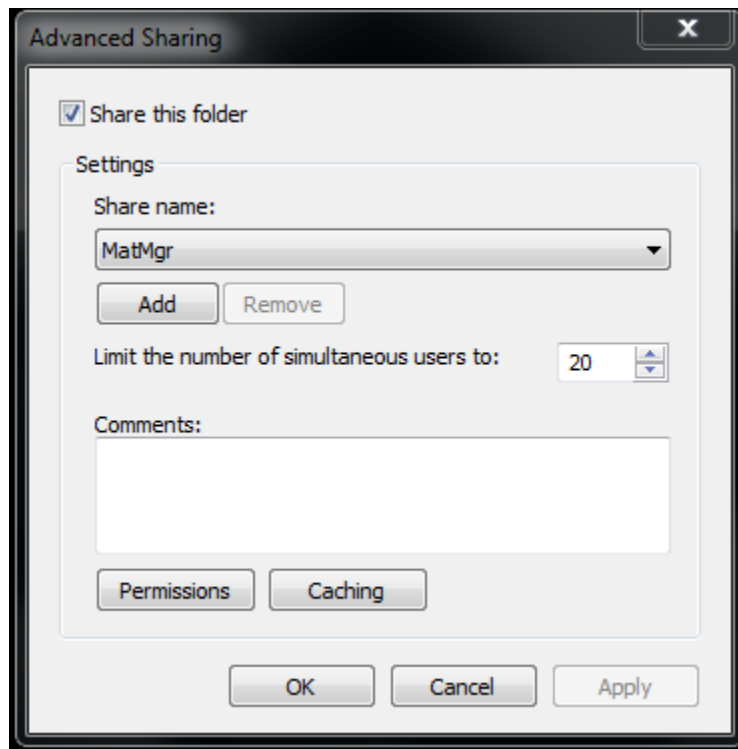
Share the C:\Program Files (x86)\Materials Manager folder.

- Right-click on the Materials Manager folder and select Properties from the context menu.
- Click on the Sharing Tab



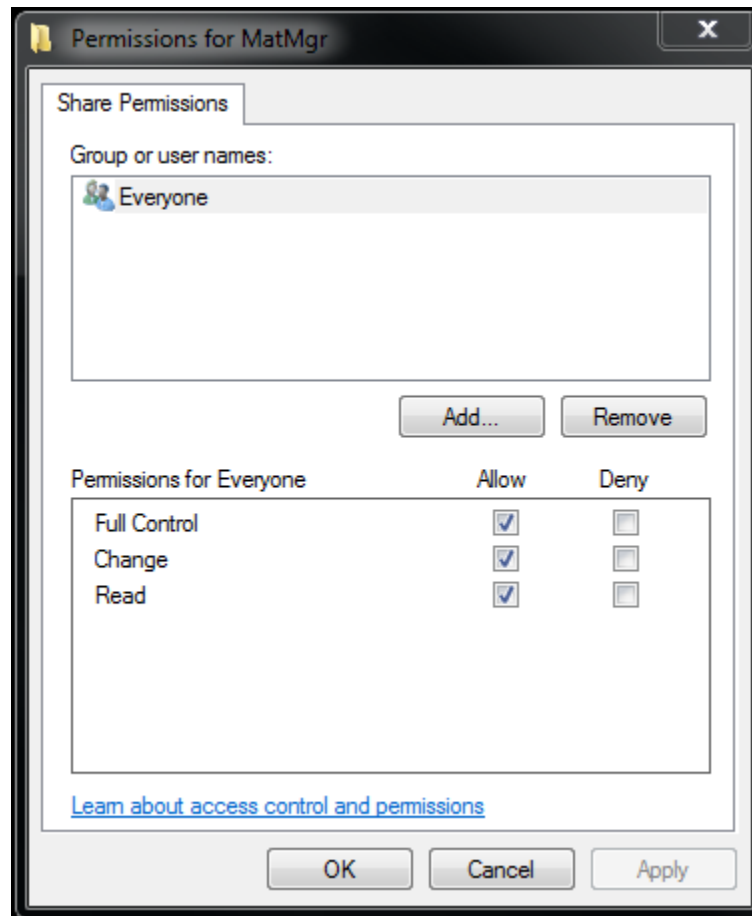
- Click Advanced Sharing...

- Tick the box for Share this folder.



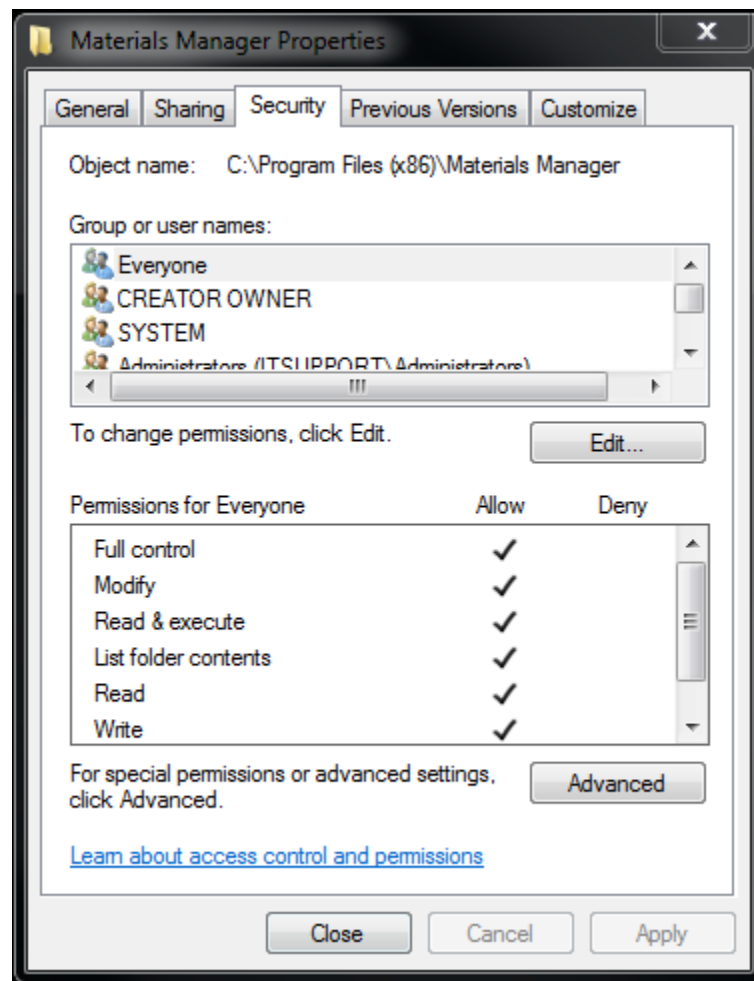
- Set the Share name: to MatMgr
- Click Apply

- Click Permission
- Set Everyone Group to have Full-Control



- Click Apply
- Click OK

- Click the Security Tab
- Set Everyone Group to have Full-Control

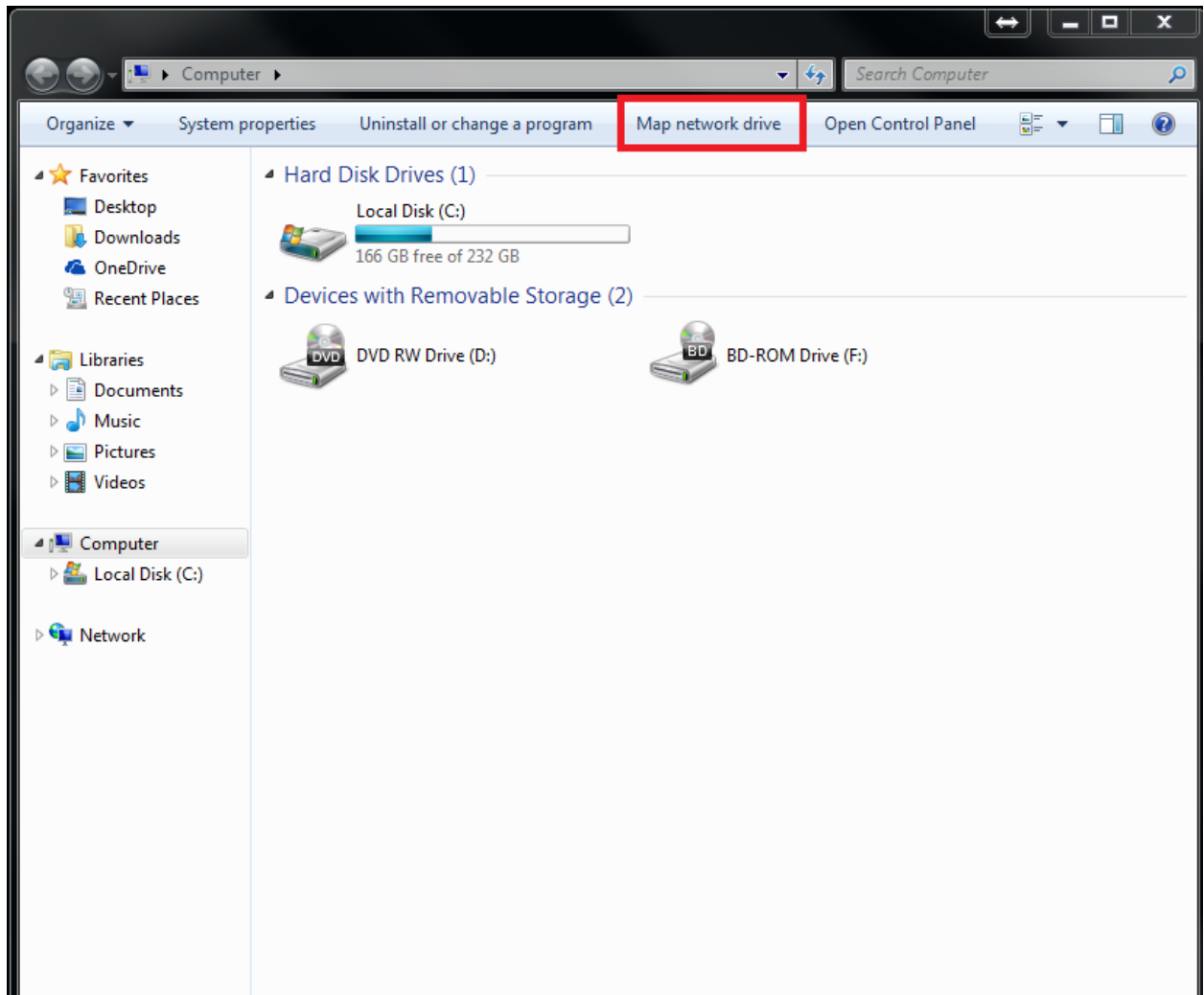


- Click Apply
- Click OK

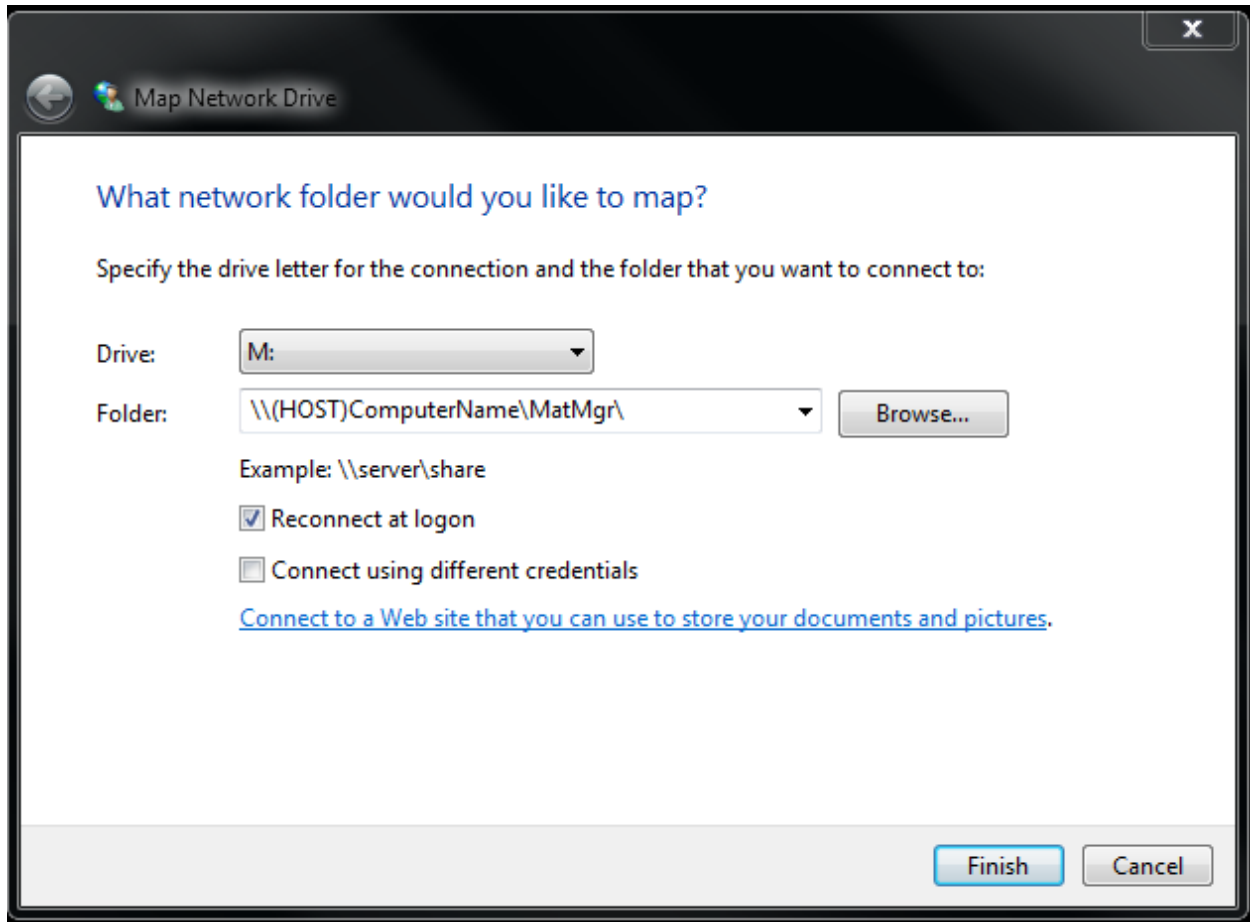
*At this point you are ready to move on to the client machine(s). Please note, in some cases, Windows will prompt you to authenticate to the host (server) machine. If this occurs, create an Administrator account with a password. Call this account whatever you want. This will be used for authenticating when mapping the network drive. **If you do not give the account a password the process will not work!***

On the client machine(s):

- Click the Start Button
- Click Computer
- Click Map network drive



- Select a Drive letter, we recommend M:
- Navigate to shared folder by clicking Browse... or typing in the computer name. (See picture below)



- Click Finish

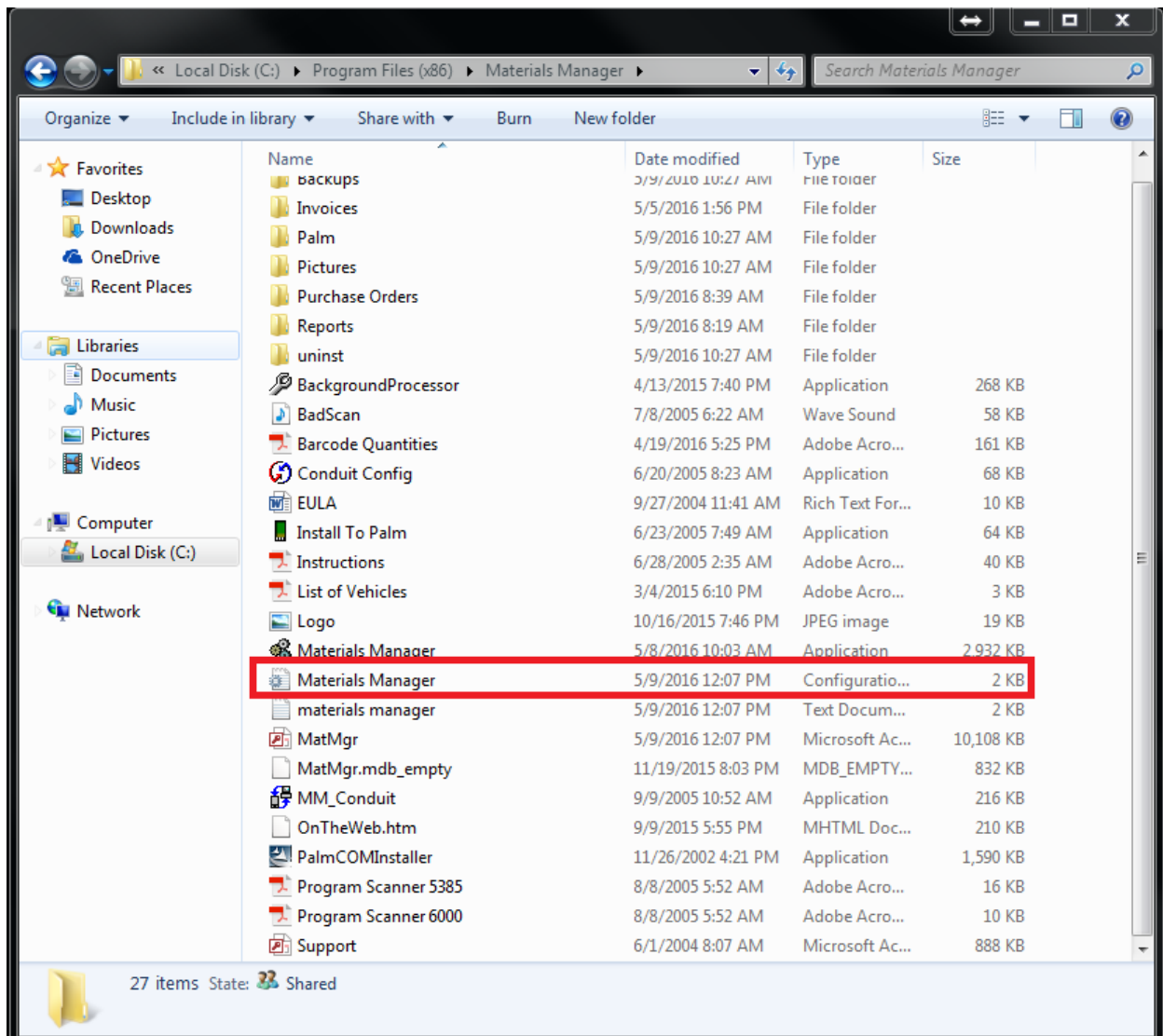
***If prompted for Credentials, enter them now using the format below:***

***(This is the account you created earlier)***

Username: (Host)ComputerName\username

Password: Whatever Password You Used

Once the drive is mapped you will need to modify the .ini (configuration file) in: C:\Program Files (x86)\Materials Manager



- Double-click the file to open it

- The file will open in Notepad

```
[Program]
Name=Materials Manager
PCPDAFile=Materials_Manager.prc
Process=5E9X+1F51v93d7G/aR0jCQ==
ConduitName=Materials Manager
CreatorID=up18
ConduitEXE=MM_Conduit.exe
RegistryPath=Software\Materials Manager\
Version=5.16.508
[Files]
LogFile=c:\program files (x86)\materials manager\materials manager.log
DatabaseFile=c:\program files (x86)\materials manager\MatMgr.mdb
BackupFolder=c:\program files (x86)\materials manager\Backups\
[PgmStatus]
RunState=0
[Backup]
LastBackup=5/9/2016 10:27:54 AM
[EULA]
Agree=1
Date=5/9/2016 10:28:00 AM
[ROPrintFormat]
Shop=0
Supplement=1
JobCost=0
[Barcode]
Size=0
[Log]
Extended=0
[PrintHardCopy]
ROHardCopy=1
POHardCopy=1
ReportHardCopy=0
[PrintToPDF]
ROToPDF=1
ROpdfpath=C:\Program Files (x86)\Materials Manager\Invoices
POToPDF=1
POpdfpath=C:\Program Files (x86)\Materials Manager\Purchase Orders
ReportToPDF=1
Reportpdfpath=C:\Program Files (x86)\Materials Manager\Reports
[PrintToJPEG]
ROToJPG=1
ROjpgpath=C:\Program Files (x86)\Materials Manager\Invoices
POToJPG=1
POjpgpath=C:\Program Files (x86)\Materials Manager\Purchase Orders
ReportToJPG=1
Reportjpgpath=C:\Program Files (x86)\Materials Manager\Reports
[RequireLogIN]
PO=1
RO=1
ProdMain=1
Report=1
```

- Locate DatabaseFile=c:\program files (x86)\materials manager\MatMgr.mdb
- Change this to read: M:\MatMgr

**Note: M: is whatever letter you gave to the mapped network drive**

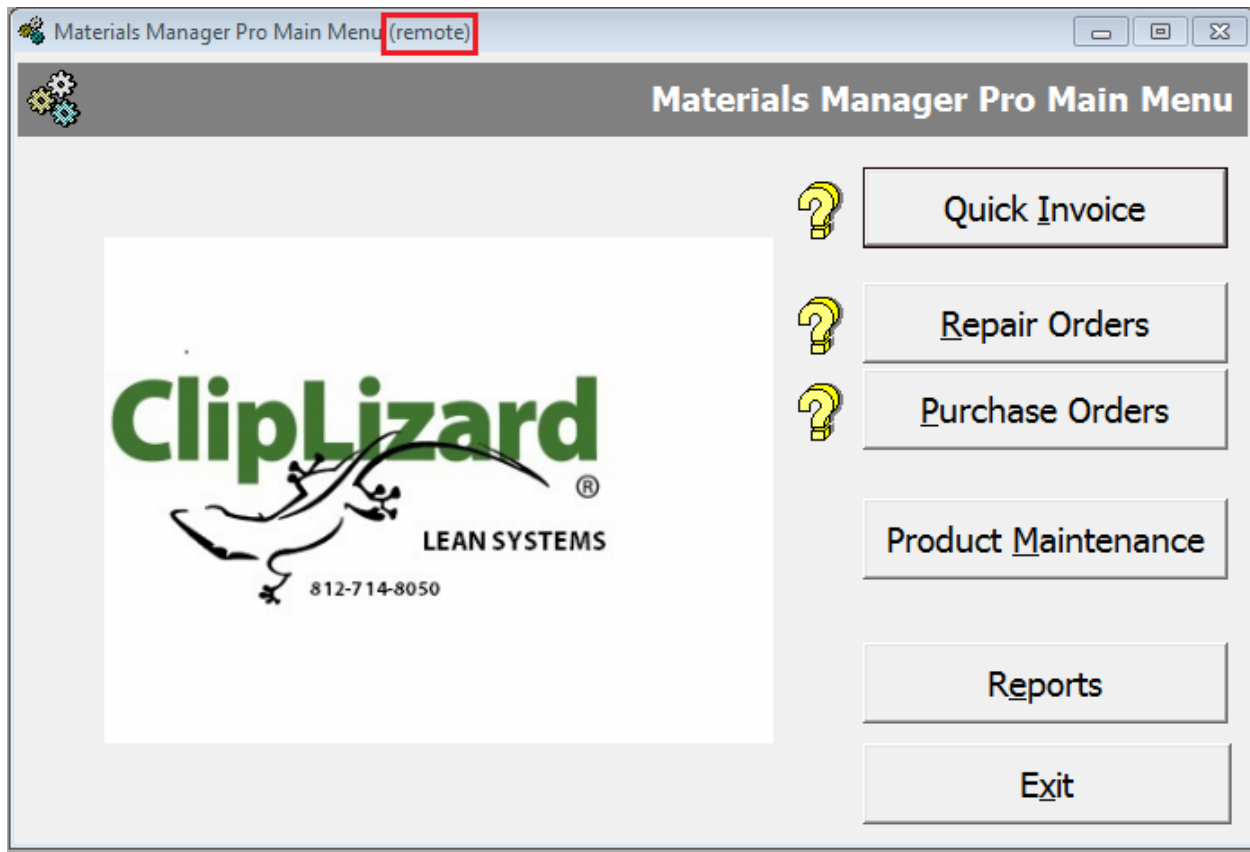


Finished product should look like the picture below:

```
[Program]
Name=Materials Manager
PCPDAFile=Materials_Manager.prc
Process=5E9X+1F51v93d7G/aROjCQ==
ConduitName=Materials Manager
CreatorID=Up18
ConduitEXE=MM_Conduit.exe
RegistryPath=Software\Materials Manager\
Version=5.16.508
[Files]
LogFile=c:\program files (x86)\materials manager\materials manager.log
DatabaseFile=M:\MatMgr.mdb
BackupFolder=c:\program files (x86)\materials manager\Backups\
[PgmStatus]
RunState=0
[Backup]
LastBackup=5/9/2016 10:27:54 AM
[EULA]
Agree=1
Date=5/9/2016 10:28:00 AM
[ROPrintFormat]
Shop=0
Supplement=1
JobCost=0
[Barcode]
Size=0
[Log]
Extended=0
[PrintHardCopy]
ROHardCopy=1
POHardCopy=1
ReportHardCopy=0
[PrintToPDF]
ROToPDF=1
ROpdfpath=C:\Program Files (x86)\Materials Manager\Invoices
POToPDF=1
POpdfpath=C:\Program Files (x86)\Materials Manager\Purchase Orders
ReportToPDF=1
Reportpdfpath=C:\Program Files (x86)\Materials Manager\Reports
[PrintToJPEG]
ROToJPG=1
ROjpgpath=C:\Program Files (x86)\Materials Manager\Invoices
POToJPG=1
POjpgpath=C:\Program Files (x86)\Materials Manager\Purchase Orders
ReportToJPG=1
Reportjpgpath=C:\Program Files (x86)\Materials Manager\Reports
[RequireLogIN]
PO=1
RO=1
ProdMain=1
Report=1
```

- Save your changes
- Open up Materials Manager

If done correctly, Materials Manager will show Materials Manager (remote).



- Check your list of Technicians to make sure the list is populating
- Check Product Maintenance, you should see product
- Check Repair Orders, any repair orders will show up

**Congratulations! You have successfully networked Materials Manager!**

If you have any questions regarding this process, please call us at 812-714-8050 Ext:4 for Technical Support. We can also be reached via email at [support@cliplizard.com](mailto:support@cliplizard.com)

Office hours are Monday – Friday 8am to 5pm EST.